



# THE *Fairfax*

The **Perfect** Family Home

- Owner's Entry - Keep Clutter Out of the Main Living Spaces
- Second Floor Laundry Room & Bonus Loft Space
- Formal Dining Room - Flows into Café, Kitchen & Great Room
- Dual Zoned Heating & Cooling System For Your Comfort

[paynefamilyhomes.com](http://paynefamilyhomes.com) • 314-477-1218

OUR HOUSE. *Your Home.*



# FAIRFAX FIRST FLOOR PLAN

(Based on Elevation A)

2 Story | 4 Bedrooms | 2.5 Baths | 2,480 Sq. Ft.



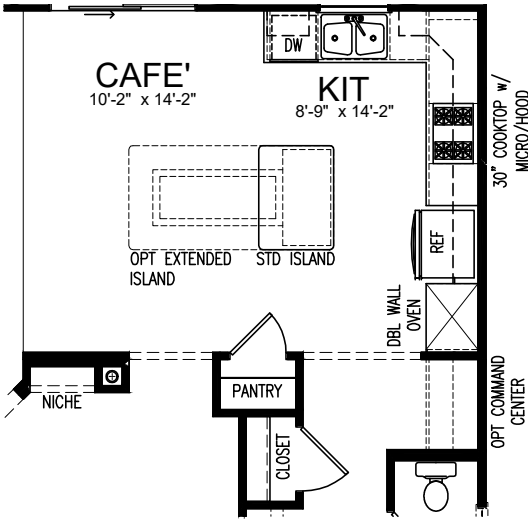
paynefamilyhomes.com · 314-477-1218

OUR HOUSE.

*Your Home.*



# FAIRFAX FIRST FLOOR OPTIONS



## Deluxe Kitchen

Optional



## Deluxe Kitchen with Optional Expanded Island

Options Shown

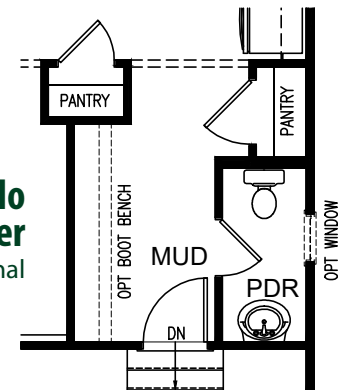


## Screened Porch

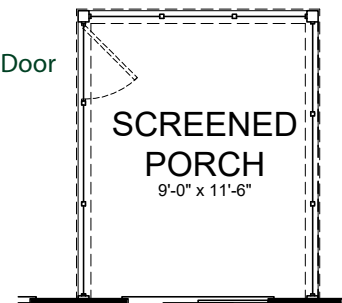
Options Shown

## 2nd Pantry into Command Center

Optional



Opt Door



## Screened Porch

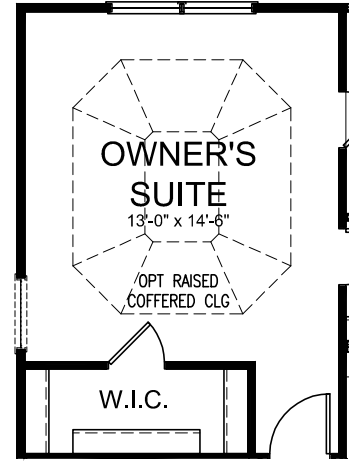
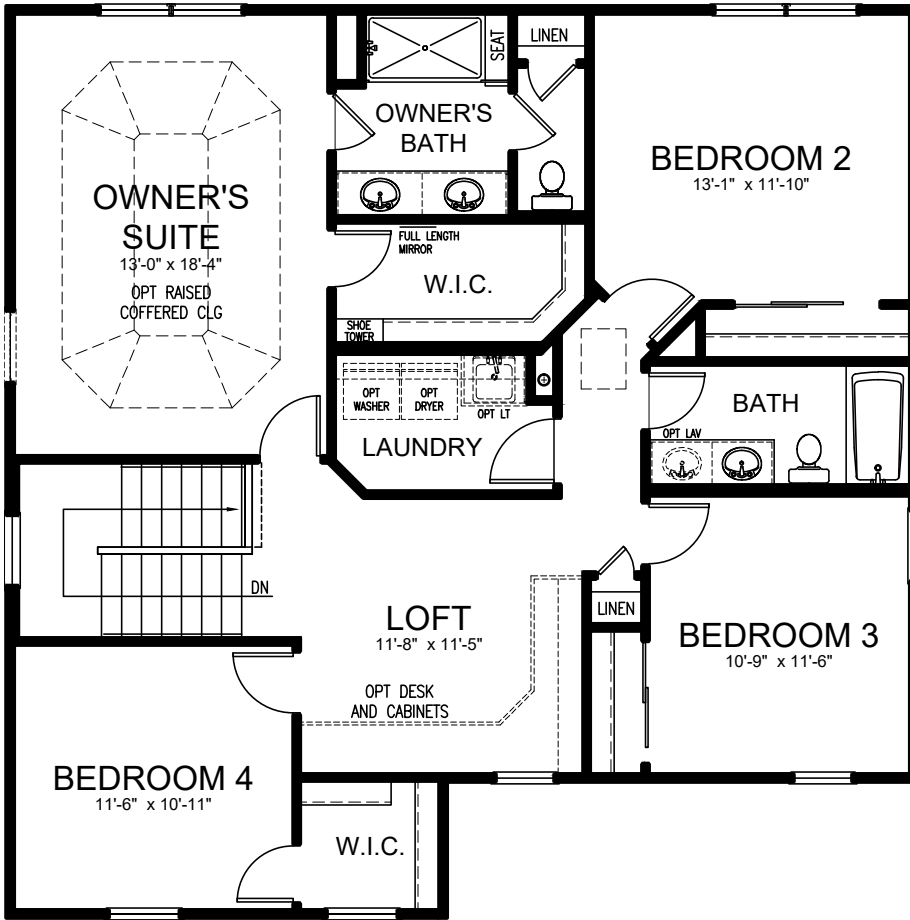
Optional

\*Payne Family Homes reserves the right to make changes or improvements to products, prices and specifications without notice to maintain our continuous improvement policy. Select plans are restricted to certain sites. All square footages are approximate. Images shown are artist's conception and may vary from as built models. Please see a community sales manager for details.

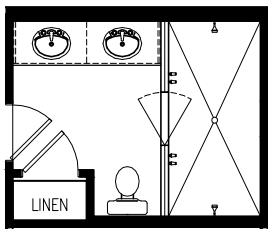
# FAIRFAX SECOND FLOOR PLAN

(Based on Elevation A)

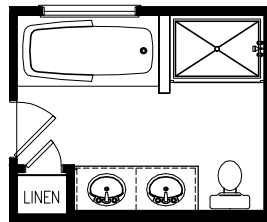
2 Story | 4 Bedrooms | 2.5 Baths | 2,480 Sq. Ft.



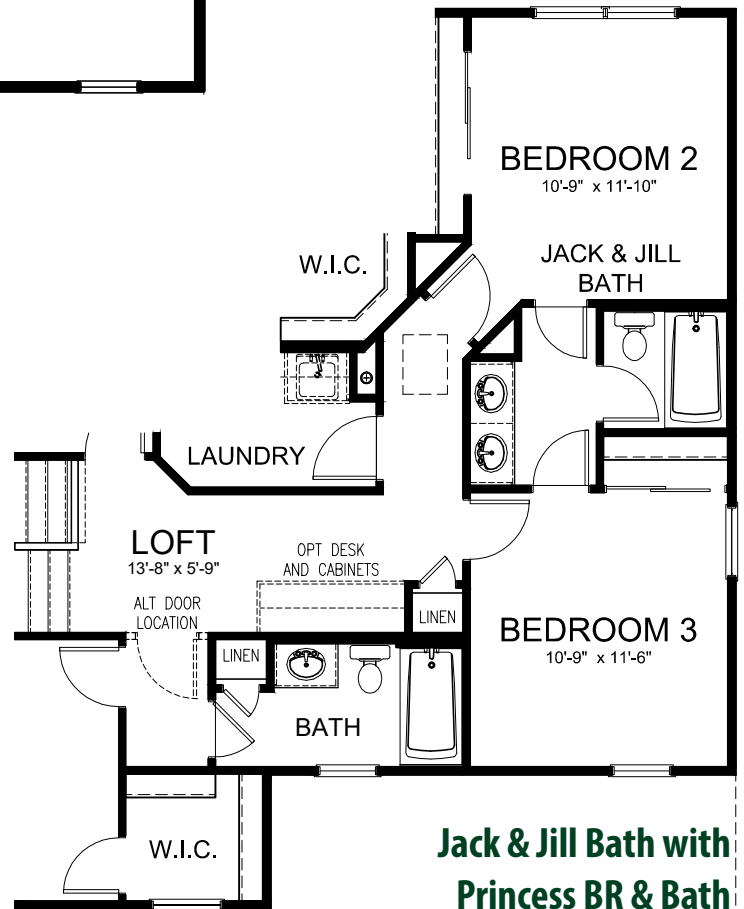
**Additional Master Closet**  
Options Shown



**Luxury Master Bath with Dual Shower**  
Optional

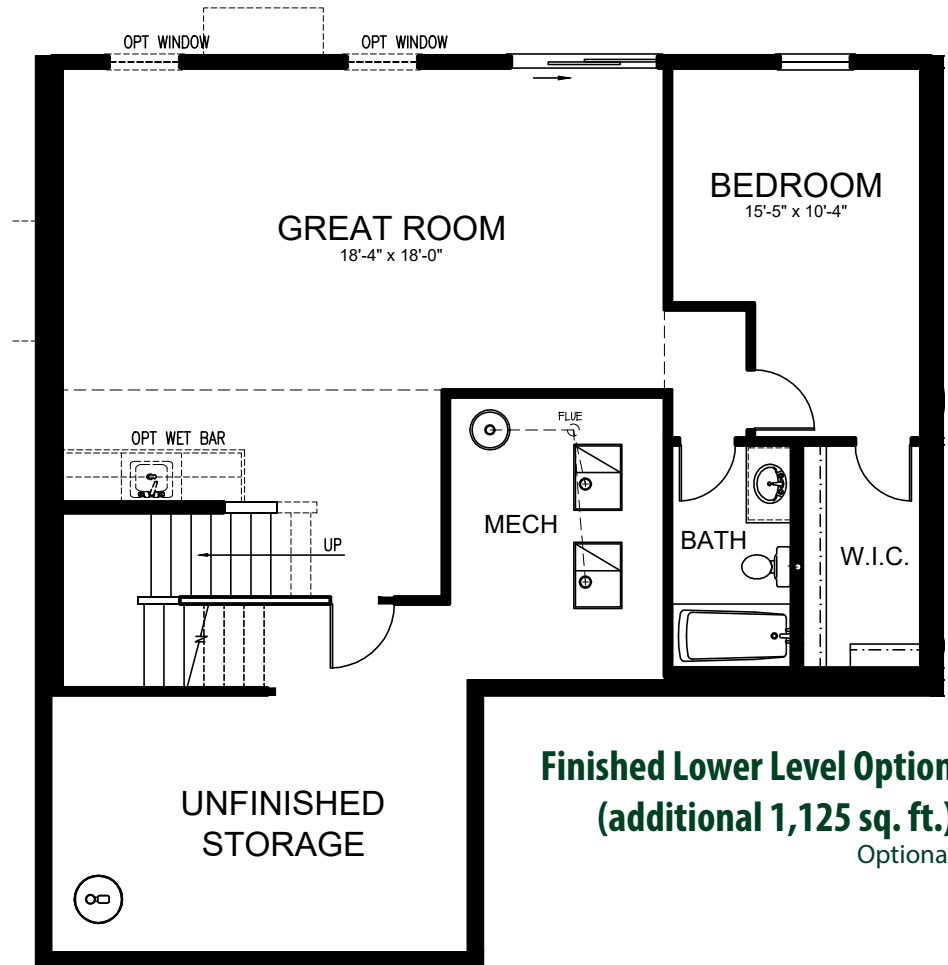


**Luxury Master Bath with Tub & Shower**  
Optional



**Jack & Jill Bath with Princess BR & Bath**  
Optional

# FAIRFAX FINISHED LOWER LEVEL OPTION



\*Payne Family Homes reserves the right to make changes or improvements to products, prices and specifications without notice to maintain our continuous improvement policy. Select plans are restricted to certain sites. All square footages are approximate. Images shown are artist's conception and may vary from as built models. Please see a community sales manager for details.

# FAIRFAX 3 CAR GARAGE OPTION

(Based on Elevation A)

2 Story | 4 Bedrooms | 2.5 Baths | 2,480 Sq. Ft.



paynefamilyhomes.com · 314-477-1218

OUR HOUSE. *Your Home.*



# FAIRFAX 3RD CAR OPTION



Elevation C

\*Payne Family Homes reserves the right to make changes or improvements to products, prices and specifications without notice to maintain our continuous improvement policy. Select plans are restricted to certain sites. All square footages are approximate. Images shown are artist's conception and may vary from as built models. Please see a community sales manager for details. Side light and garage windows standard. See blueprint.

# THE FAIRFAX



Elevation A



Elevation B



Elevation C



Elevation C w/Brick

\*Payne Family Homes reserves the right to make changes or improvements to products, prices and specifications without notice to maintain our continuous improvement policy. Select plans are restricted to certain sites. All square footages are approximate. Images shown are artist's conception and may vary from as built models. Please see a community sales manager for details. Side light and garage windows standard. See blueprint.

