



THE *Bordeaux*

Well-Appointed **Carefree Condo**

- Modern, Open Floor Plans Suitable for Gathering & Entertaining • Climate Controlled, Secure Entry & Vestibule
- Full Size Washer & Dryer Hook Up in All Units • Maintenance Free Composite Deck & Railing

paynefamilyhomes.com • 314-328-8525

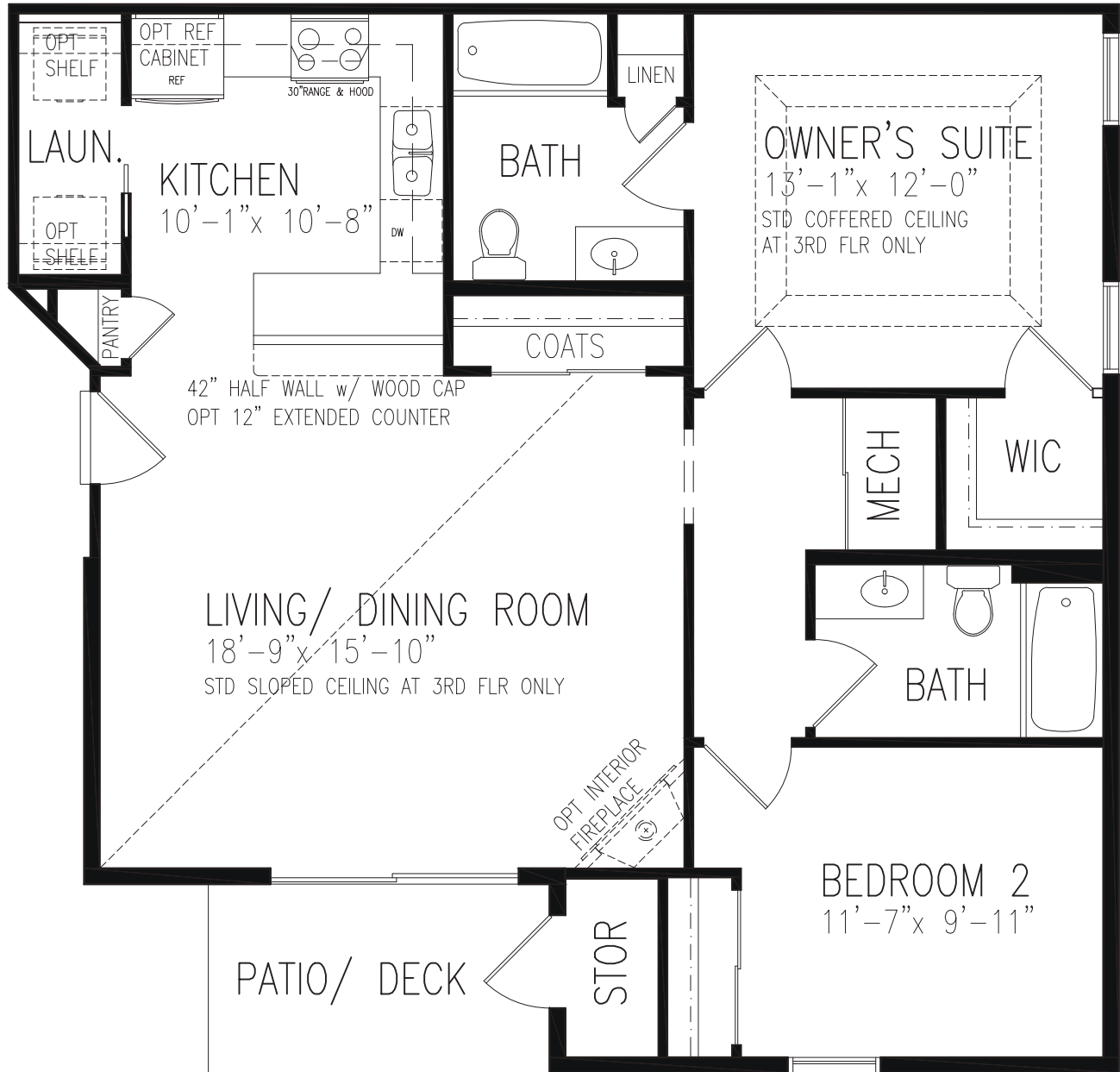
OUR HOUSE. *Your Home.*



STARMONT BORDEAUX

(Based on Unit 1B)

1 Story | 2 Bedrooms | 2 Baths | 1,078 sq. ft.



paynefamilyhomes.com · 314-328-8525

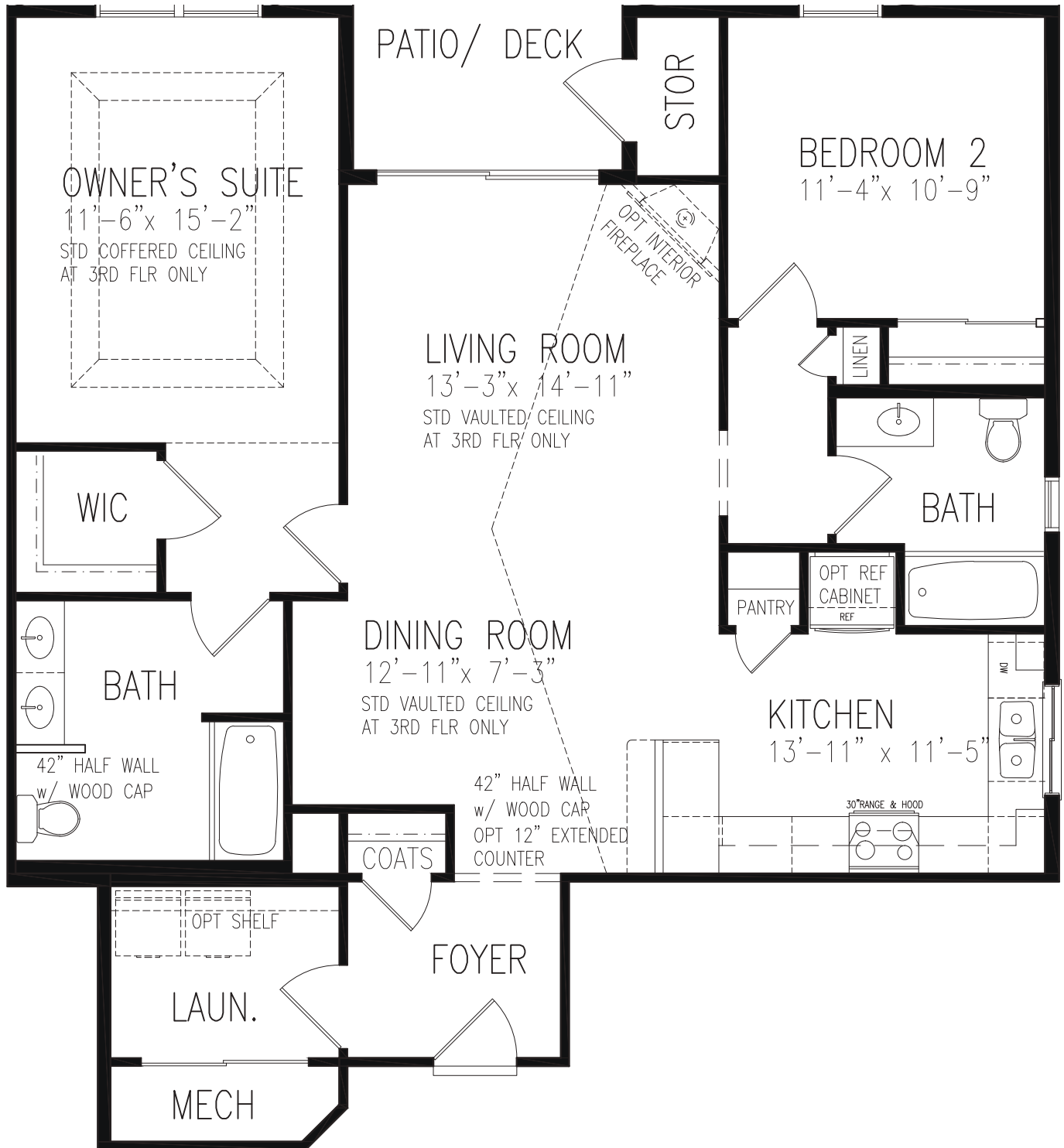
OUR HOUSE. *Your Home.*



WELLINGTON BORDEAUX

(Based on Unit 2B)

1 Story | 2 Bedrooms | 2 Baths | 1,270 sq. ft.



*Payne Family Homes reserves the right to make changes or improvements to products, prices and specifications without notice to maintain our continuous improvement policy. Select plans are restricted to certain sites. All square footages are approximate. Images shown are artist's conception and may vary from as built models. Please see a community sales manager for details.

THE BORDEAUX



paynefamilyhomes.com · 314-477-1218

OUR HOUSE. *Your Home.*



122118